

# Orlansoft ERP



Orlansoft ERP is an ERP (Enterprise Resource Planning) solution that provides a unified business operation in a single software system that integrates and optimize business process, and deliver on-demand access to critical realtime information across entities and sites from a single source of truth.

## INDUSTRY SUPPORT :



WHOLESALE-  
DISTRIBUTION



RETAIL



TRADING



SERVICE



MANUFACTURING

# ORLANSOFT COMMON FEATURES (COM)

A selected list of common features, found across all Orlansoft ERP modules, providing the flexibility, security, and maintainability of an enterprise-scale system.



## ORLANSOFT MULTIPLE CURRENCIES

Orlansoft multi-currency capabilities give you the flexibility to perform transactions in any currency with the managed conversion rate. Global enterprises can conduct business in the required currency of transaction and generate consolidated reports in dual home currency (base currency and company management currency)

### Features & Functions :

- ▶ Dual home currency feature can generate Financial reports in local country currency and Head office currency. This feature stores all transactions in original currency, base currency, and company management currency with an actual exchange rate of each transaction.
- ▶ Default currency for Suppliers & Customers will help to minimize human error in transactions
- ▶ Multiple currencies feature available on the Sales and Purchase Price List for each Item to manage prices in multiple currencies.
- ▶ All transactions can use the multiple currencies feature. Customer or Supplier who has transactions in some currencies can have one Customer ID or one Supplier ID.
- ▶ The Exchange Rate Type and Exchange Rate menus used to define company policies related to foreign currency conversion. The Exchange Rate Type is used to determine the use of only the Tax Rate, a combination of Tax Rate and Commercial Rates, or other exchange rate policies that will be used for each Transaction Type. The validity period and the conversion value (exchange rate) for each Exchange Rate Type are defined in the Exchange Rate menu.
- ▶ Automatic calculation of Unrealized Forex Gain or Loss by invoice# for Account Receivable & Account Payable with system generated journals.
- ▶ Automatic calculation of Unrealized Forex Gain or Loss by user-defined Cash, Bank, or Loan accounts with system generated journals.
- ▶ Automatic Realized Forex for Account Receivable or Account Payable Payments.







## ORLANSOFT APPROVAL SET

Orlansoft Approval Set is available in each transaction type in all modules. It enables you to assign approvers to a transaction according to its value.

You may assign one or more approvers to an amount limit, and set a minimum number of approvers for certain transactions. Approver group can be defined to organize approver. The member of the approvers may substitute the other when they are unavailable.



Pending Approval menu allows approvers to quickly review in detail transactions and release their approval in desktop computers or tablets. The System limits unapproved transactions, so they cannot be used in the next transaction process.



## ORLANSOFT TAX MANAGEMENT



Orlansoft Tax Management features comprehensive compliance with Indonesian tax regulations in the System.

### Features & Functions :

- ▶ Multiple tax types and tax rates can be defined for each Item ID with negative or positive rates. The negative rate usually used in the With-holding tax calculation.
- ▶ Tax Calculation can be set up as a default for each Transaction Type with option: included, excluded, or no-tax.
- ▶ Support Indonesian With-holding Tax and Value Added Tax with automatic sales tax invoice numbering for centralized or decentralized numbering and easy to generate VAT.csv file for integration to e-Faktur application.
- ▶ With-holding Tax feature will automatically calculate taxes on sales or purchase transactions for each service item based on the tax rate defined in Orlansoft Tax Type.
- ▶ Reconciliation report for Sales Tax Invoice and Purchase Tax Invoice.
- ▶ Supplier Tax Group used to define the tax rate for a specific supplier that has a different tax rate for the same item compared to other suppliers. Supplier Tax Group used in Purchase Order transactions.
- ▶ Customer Tax Group used to define the tax rate for a specific customer that has a different tax rate for the same item compared to other customers. Customer Tax Group used in Sales Order transactions.
- ▶ Rounding of tax value in transactions with multiple currencies can be defined to meet tax regulations.



## ORLANDSOFT USER PRIVILEGES

The number of User Groups and names can be specified in the User Group menu to meet the company's business process requirements.

Login ID and password for each end-user can be set up in the User Login menu. Each Login ID can access one or more Entity IDs and one or more Site IDs.

Access settings in Orlandsoft ERP use a combination of accesses :

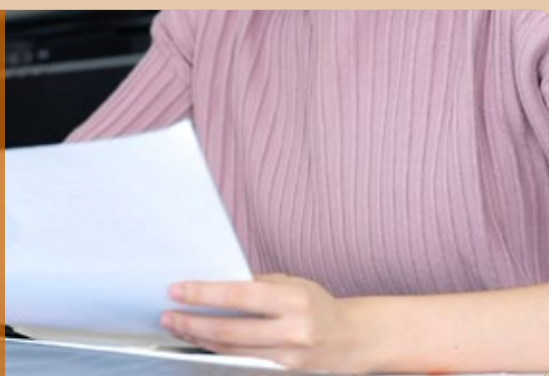
- ▶ The Master data user is used to define users who are allowed to access each master data. For example, user A only allowed to access warehouse 101, and user B may access warehouse 101 & 102. For the master data without user assignment, security access will base on Entity ID in each Login ID.
- ▶ Transaction Type Users are used to define who are users that allow accessing each Transaction Type. For example: In the same Transaction code of Sales Order, user A may access Domestic Sales Order, user B may access Export Sales Order, and user C may access both.
- ▶ Setting Privilege provides security access for each menu, including access to some fields, or button for each User Group.
- ▶ Each User Group may have a unique name of the menu and a customizable list of menus. This feature can be set up in Orlandsoft Custom Menu.



## PRINT SETTING

Orlandsoft Print Setting used to set up the layout of the transaction menus, button labels for print or reprint, and assign must approve transactions before printing.

Orlandsoft Print Setting also has functionality for setting up a layout report for each master data menu. The layout of documents can be customized to meet business process requirements.



## USER DEFINED REPORTS

Orlandsoft makes it possible for users to develop their reports and manage access from Orlandsoft User Defined Reports.

### Features & Functions :

- ▶ It's easy to customize a new report or an existing report.
- ▶ English-like table names and fields to facilitate the user in interpreting the data contents of each field and the links between tables.
- ▶ Security access for each report can be defined.
- ▶ Default Report Parameters can be set to speed up the view report process.



## PROCURE TO PAY

Orlansoft ERP is a fully integrated solution, designed to support an end-to-end Procure to Pay business process that begin with goods and services requisitioning, ordering, purchase receipt, invoice matching and end with ready to pay invoices in Orlansoft Payment Run.

Orlansoft ERP optimizes the purchasing process and helps the organization through better financial controls and efficiency. This streamlined, integrated system saves costs and reduces risk.



### ORLANSOFT PURCHASING (PUR)

Orlansoft Purchasing provides comprehensive support for procuring inventories or non-inventory items in a centralized environment at regional offices or distributed environments at each branch office.

Basic functions include the creation, approval, process, and print of Purchase Request and Purchase Order, integrated Receiving and Return to Supplier, and tight integration to Inventory, Account Payable, Fixed Assets and General Ledger.

#### Features & Functions :

- ▶ Multiple Request Transaction Type feature allows users to create, approve, and print separate Purchase Requests for each department or business unit. This feature provides a requisition process of inventories, fixed assets, or expenses from creation through an approval process.
- ▶ Purchase Request can be generated automatically from Orlansoft Manufacturing and auto Purchase Request from minimum stock. Batch Insert feature is available to accelerate the process of creating a manual Purchase Request.
- ▶ Create Multiple PO menu accelerates the process of creating multiple Purchase Order from one Purchase Request transaction.
- ▶ Create PO from PR menu is available to facilitate Purchase Order creation from multiple outstanding Purchase Requests with the Purchase Price List as a default price.
- ▶ One or more Sales Orders from customers can be copied as Purchase Order with Purchase Price List as a default price via Create PO from the SO menu.
- ▶ Create PO Multiple Entity is used to support Centralized Purchasing business policy in creating a Purchase Order transaction for 2 to 5 stores or branches in a single process to get minimum quantity discount from suppliers
- ▶ Purchase Price List provides the following features :
  - Price & Discount by Item ID & Unit ID
  - Up to 5 level discount percentage by Item ID
  - Discount in Amount by Item ID
  - Price in multiple currencies
  - Additional discount in percentage or amount based on transaction value of Purchase Order.
- ▶ Create PO Drop Ship menu used to generate purchase order of drop-shipment Sales Order.
- ▶ Generate Receiving from partial order, single order, or multiple purchase orders.
- ▶ Receiving transactions may have the same or smaller quantity than quantity in Purchase Order. Specific items that allowed to have a larger received quantity within a predefined tolerance level can be set up in the Negative / Positive Quantity Tolerance by item feature. Receiving transactions adds stock on-hand, create system generated journal to Inventory Account and Uninvoiced Purchase Account, and printed as Goods Receipt Note (GRN) documents.
- ▶ Receiving transaction of fixed assets creates a Fixed asset addition transaction as new asset registration and creates a Fixed asset temporary journal.



- ▶ Purchase Shipping Cost feature in the Purchase Invoice of custom clearance service fees, import duty, and shipping cost will allocate purchasing related cost into inventory cost in selected Receiving transactions based on quantity, value, or item weight.
- ▶ Sharing of suppliers and items across entities can be defined based on Entity access, supplier group, and item group.
- ▶ Orlansoft Purchase Return Order facilitates the request and approval processing of return to suppliers transaction. Goods issue from warehouse and return goods to a supplier transaction can be created in Orlansoft Purchase Return. Purchase Return transaction has seamless integration to Orlansoft Account Payable as a deduction or payment to AP Balance.
- ▶ The company's budget allocation and realization can be maintained in Orlansoft Budget by Project feature. Budget realization in Purchase request transactions and purchase order transactions can be limit in quantity and or budget value for each Project ID. A Budget revision for each Item ID in each Project ID (including budget addition or deduction) can be maintained in Budget by Project transactions.
- ▶ Easy to track Purchase status in Outstanding purchase request, Outstanding purchase order, Unbilled receiving, and PO to Payment reports.
- ▶ The Purchase History menu in Supplier master data or Item master data provide purchase histories of each supplier and item ID.



## ORLANSOFT ACCOUNT PAYABLE (AP)

Orlansoft Account Payable used for supplier's invoice verification, validate QR code of Purchase Tax Invoice, processing cycle payment, and monitoring outstanding payables.



### Features & Functions :

- ▶ Easily tracks outstanding payables & payments in multiple currencies.
- ▶ Comprehensive AP Aging Reports
- ▶ Supplier invoice verification based on the three-way-matching of the purchase order, receiving, and invoice:
  - Single Receiving from each invoice from Suppliers
  - Single Order and multiple Receiving Invoice
  - Multiple Order and multiple Receiving Invoice
  - Auto invoice feature in Receiving transaction type will accelerate the Purchase invoice (Request for Payment) creation in Orlansoft Account Payable. Auto invoice feature can use the same number with Receiving transaction number or different numbering.
- Automatic net-off of purchase receiving & purchase return in Purchase Invoice transaction.
- Supplier Advances invoice and its allocation to Purchase Receiving Invoice
- Registering and validating the QR code of Purchase Tax Invoice.
- ▶ Supplier Group dimensions can be activated to meet business process requirements. Two group dimensions with two levels each are available. Each level and group dimension can be used to allow the generation of flexible Supplier Group Performance Reports, such as Supplier Service Level report.

► Orlansoft Payment Run facilitates cycle payment with the supplier payment schedule. Users can define the total value of payments, and the System will allocate it automatically to the nearest due invoices or overdue invoices. Users are allowed to have manual invoice selection before click create Payment for system-generated Bank Disbursement transaction for each supplier.

► Write-off AP Rounding can be easily performed with a maximum rounding limit and can be accessed by specific users.

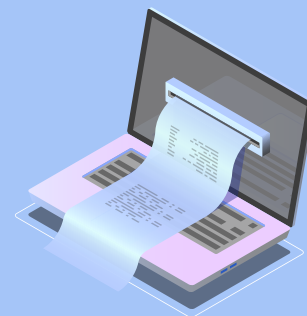
► AP Unrealized Forex Calculation provides automatic process unrealized forex gain/loss calculation for all AP invoices and its resulting system-generated journal to Orlansoft General Ledger.

Orlansoft ERP is designed to have seamless integration to **Orlansoft Supplier Portal** to reduce complexity and enables Suppliers to submit invoices electronically.

Seamless Integration to:

**Orlansoft  
SupplierPortal**

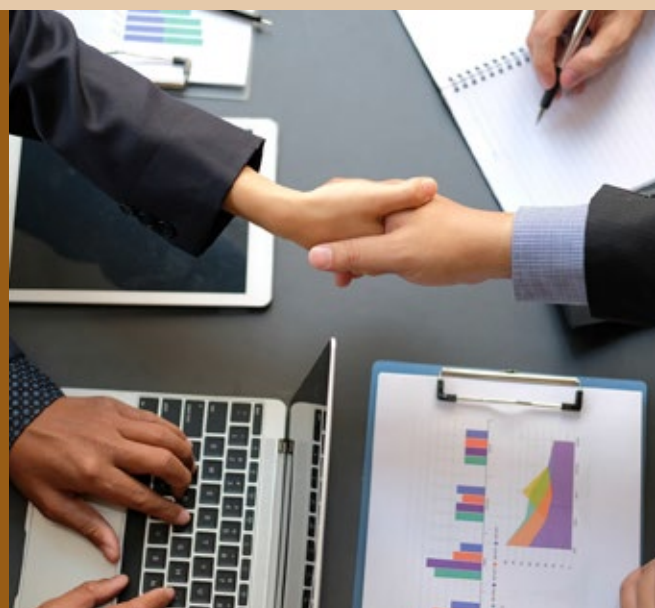
Orlansoft SupplierPortal provides an easy to access realtime information on Purchase Order, Purchase Receipt, Purchase Invoice, and Payment status from all the stores, distribution centers, branches, business unit offices, and the Head Office for Suppliers.



## ORDER TO CASH

The Order to Cash cycle consists of the following steps :

- Receive orders from customers.
- Documenting customer order and record it in the ERP System.
- Conduct a credit review of the customer before releasing the order.
- The tasks of fulfilling the order such as stock allocation, picking goods, loading for shipment
- The order is shipped to the customer or service is performed.
- An invoice is created and submit to the customer.
- Cash collection by account receivable team
- Receive customer payment and record it in the ERP System.



Orlansoft ERP is designed to support smooth operations and to optimize Order to Cash business process starts when receiving customer requests for goods or services and ends with customer payments.

Orlansoft ERP helps the company in automating Order to Cash business process to create positive impacts on supply chain management, to improve cash flow, and to reduce operation and administrative costs.

Seamless Integration to:

**Orlansoft  
Point of Sale**





## ORLANSOFT SALES (SAL)

Orlansoft Sales used for creating, approving, and printing Sales Quotation and Sales Order, checking stock availability, verifying customer credit, recording and printing delivery order and sales shipment, managing Load Sheet, and providing control reports with tight integration to Inventory, Account Receivable and General Ledger.

### Features & Functions :

- ▶ Online stock availability information provides a faster process of sales order transactions. Users can review stock availability for specific sites with possible security assignments.
- ▶ Credit Approval Process with credit limit and credit days verification is embedded in sales order approval to ensure each sales shipment has gone through a credit check to minimize bad debts.
- ▶ Approve Sales order transactions with credit exception used to release over credit limit or overdue days. Approver of credit limit exception can be different approver for overdue days exception. Orlansoft Exception logs store Credit exception histories and provide a comprehensive audit trail report.
- ▶ Comprehensive Sales Price List Management :
  - Price & Discount by Item ID & Unit ID
  - Up to 5 level discount percentage by item ID
  - Discount in Amount by Item ID
  - Price in multiple currencies
  - Additional discount in percentage or amount based on transaction value of Sales order.
- ▶ Promo master provides:
  - Quantity Discount. Bigger discounts for purchase in larger quantities.
  - Buy 2 get 1 free for the same or different items or additional merchandise.
  - Buy 10 will immediately get a voucher of Rp 10,000 and can be used for the next purchases.
  - Buy personal care products from XYZ brands worth Rp 400,000 and get an extra 1 bottle of item G.
  - Buy item X and have eligibility to buy item Y for Rp 10,000 from the normal price of Rp 50,000
- ▶ Centralized Bill-to Customer with multiple Sale-to and Ship-to customer feature allow users to accommodate customer requirement of centralized Bill-to invoice for sales transactions from many branches of customer, with shipment to the warehouse of each branch office. Price ID and Promo ID of Sale-to customer will be used to calculate sales prices, discounts, and promo in Sales order transactions.
- ▶ All transactions in the Pesanan menu of Orlansoft SalesMate Mobile-Apps has seamless integration with the Call management menu in Orlansoft Sales. All transactions will be synchronized automatically by Background Synchronization feature (Auto Offline-Online mode) with option: auto Sales order or auto Sales invoice.
- ▶ Orlansoft Consignment Sales supports the sales shipment business process with a consignment credit limit for customers in each virtual location.
- ▶ Delivery Order (DO) feature used when the business process has requirements that the quantity of stock on-hand must be deducted after loading to vehicles is completed, or shipment to customer is delivered. Issue goods from the warehouse can use the Delivery order transaction, and stock on-hand deduction calculated when sales shipment creation.
- ▶ Generate shipment transactions from partial order, single order, or multiple sales orders.
- ▶ Shipment transactions may have the same or smaller quantity than quantity in Sales order. Specific items that allowed to have a larger shipped quantity within a predefined tolerance level can be defined in the Negative / Positive Quantity Tolerance feature by item. Shipment transactions will deduct stock on-hand, create system generated journal to Inventory Account and Uninvoiced Shipment Account, and can be printed as Delivery Note (DN) documents.



- ▶ Creating Sales Shipment transactions can use the following features :
  - Process create shipment to accelerate sales shipment creation based on sales order date in a single processing. Quantity in Sales shipment transactions will have a smaller number than sales order if the quantity of stock on-hand is lower than the outstanding order quantity.
  - Create Shipment from DO used to release Delivery order to generate Shipment transaction and deduct the quantity of stock on-hand
  - Create DropShip for shipment of Sales Order DropShipment Sales order transaction will automatically generate goods receiving transaction with DropShip quantity in a single process.
  - Shipment transactions can be auto-generated from approval of auto-shipment Sales Order transactions
  - Manual insert for Shipment transactions can use single or multiple Sales Order.
- ▶ Auto recalculate promo on shipment feature is available to calculate promo based on shipped quantity.
- ▶ Load management for vehicles available to have the highest capacity fulfillment can be performed in the Orlansoft Load Sheet. Orlansoft Load Sheet is integrated into Orlansoft DriverMate Mobile Apps to provide real-time delivery service level information.
- ▶ Orlansoft Sales Return Order facilitates the request and approval processing for transactions of return goods from customers. Receiving of returned goods from a customer in the warehouse will be performed in Orlansoft Sales Return. Sales Return transaction has seamless integration to Orlansoft Account Receivable as a deduction or payment to AR Balance.
- ▶ Up to 5-level salesperson grouping, from sales director to sales representative.
- ▶ Sharing of customers and items across entities can be defined based on Entity access, customer group, and item group.
- ▶ Easy to track sales status in Outstanding Sales quotation, Outstanding sales order, Unbilled shipment, and SO to Payment reports.
- ▶ Sales History menu in Customer master data or Item master data provides sales histories of each customer and item ID.



## ORLANSOFT ACCOUNT RECEIVABLE (AR)

Orlansoft Account Receivable supports Sales Invoice generation and printing, manages and allocates Sales Tax Invoice number, invoice submission and payment collection, performs credit management, records customer payments, and monitors customer's AR balances.



### Features & Functions :

- ▶ Easily tracks customer's AR balances & payments in multiple currencies.
- ▶ Comprehensive AR Aging Reports
- ▶ Security assignment regulates user access of Customer Master Data based on customer group for each Login ID (including access to Account Receivable balances and outstanding post-dated checks).
- ▶ Some options in Sales invoice creation can be used to meet company policy. The options are:
  - Single Shipment Invoice
  - Single Order & multiple Shipment Invoice
  - Multiple Order and multiple Shipment Invoice.
  - Auto invoice in Sales Shipment transaction type accelerates Sales invoice creation in Orlansoft Account Receivable. Sales invoice from auto invoice can have the same transaction number with Sales Shipment or different numbers.
  - Automatic net-off of sales shipment & sales return in Sales Invoice transaction.
  - Invoice for Customer Advances and its allocation to Sales Shipment Invoice

- ▶ Sales tax invoice feature includes:
  - Get Tax Invoice button provides auto allocation of sales tax invoice number.
  - Easy to generate VAT.csv to upload to the e-Faktur application.
  - Process create tax invoice menu used to allocate tax invoice number for multiple sales invoices in a single process.
  - Combined Tax Invoice used to generate Faktur Pajak Gabungan for some sales invoice transactions with the same Bill-to customer ID.
- ▶ Customer Group dimensions can be activated to meet business process requirements. Four group dimensions with two levels each are available. Each level and group dimension can be used to allow the generation of flexible Sales Analysis reports and Customer Service Level reports.
- ▶ Up to 5 level grouping of customer area
- ▶ Credit management provides customer credit limit, maximum overdue days, multiple terms of payment with tight integration to the sales price list.
- ▶ Customer credit status :
  - Normal                                • Block Sales
  - Doubtful                                • Block Shipment
  - Account Closed                        • Block AR
- ▶ Collection Submission generates a list of Sales invoices to submit for collectors to perform invoice submission at the customer's office.

Day-to-submit pattern feature used for recording submission schedule for each customer. The Schedule can be in day, week, or date. Collection submission will automatically select some invoices from customer who has Day to Submit within range from submission date to days-ahead.

- ▶ Orlansoft Collection Run supports collection management to generate Collection Memo, manages the collector route, and allows analysis of collection performance. AR payment transactions will create cash receipts, bank receipts, or check receipt transactions automatically to Orlansoft Cash Management.
- ▶ Orlansoft Collection Run is integrated with the Faktur Jatuh Tempo menu in Orlansoft SalesMate mobile apps and the Penjualan COD menu in Orlansoft DriverMate mobile apps.
- ▶ Confirm Collection Receipt with fraction feature provides a convenient process for Cashier to calculate and validate incoming cash for each denomination, incoming checks, and transfer memo when approving Cash receipt, Check receipt, and Bank Receipt.
- ▶ Write-off AR Rounding can be easily performed with a maximum rounding limit and can be accessed by specific users.
- ▶ AR Unrealized Forex Calculation is an automatic process that calculates unrealized forex gain/loss for all AR invoices and its resulting system-generated journal to Orlansoft General Ledger.



## INVENTORY MANAGEMENT

### ORLANSOFT INVENTORY MANAGEMENT (IN)

Orlansoft Inventory management supports the company in inventory management, warehouses, and item groupings. It also used for creating, approving, and printing Location transfer, Put away, Replenishment order, Inter-site transfer, Inter-site receipt, and Inventory Adjustment (In or Out).



#### Features & Functions :

- ▶ Item Type can be:
  - Normal or Material
  - Manufactured (used in Bill of Material)
  - Service/Cost (for Item without inventory balance)
  - Tools (only for tools item in Orlansoft Manufacturing)
- ▶ Inventory Valuation used to calculate the unit cost and based on the following method: Moving Weighted Average, Monthly Average, or Standard Cost.

- ▶ Item Lot provides lot/batch tracking with expired date information on inventory, sales, or purchase transactions. Show earliest expired date in browse location for location transfer, and shipment feature helps warehouse users in issuing goods with auto download earliest expired date items.
- ▶ Serialized Item provides a single or dual serial number in inventory, sales, or purchase transactions. The feature used for products with a serial number, such as automotive or electronic.
- ▶ Alternate Item ID by customer or supplier allows users to define customer's or supplier's item coding and description and use it in printed purchase or sales documents. Alternate item ID used to accelerate entry process in Purchase request, Purchase order, and Sales order transactions.
- ▶ Item external file feature stores pictures or other files for detailed item information.
- ▶ Item Group dimensions can be activated to meet business process requirements. Four group dimensions with two levels each are available. Each level and group dimension can be used to allow the generation of flexible Sales Analysis reports and stock reports. Four extra fields provide additional grouping dimensions.
- ▶ Inventory Unit-Set provides unlimited conversion of UOM (unit of measurement) for items. Each Item ID may use different units for inventory, storage, purchase, and sales.
- ▶ Replenishment Order allows users to create orders to other sites to ask for inter-site transfer for stock replenishment, which may then be partially fulfilled by Inter-site Transfer and Inter-site Receipt. Outstanding replenishment order helps users in monitoring un-shipped replenishment orders. In-transit status helps users in controlling unreceived inter-site transfer. Inter-site transfer and Inter site receipt transactions can be created in Orlansoft Numbering mobile apps with seamless integration to Orlansoft Inventory management.
- ▶ Location transfer uses receiving provides put away transactions for store goods from supplier to racks (shelves). Location transfer with a single source and single destination feature can be used for moving multiple items from one location to another area within the same warehouse in a single transaction. Put away and location transfer transactions can be created in Orlansoft Numbering mobile apps with seamless integration to Orlansoft Inventory management.
- ▶ Orlansoft Stock-take involves the generation of stock take list & tag number. Users then view the list, print stocktake form, enter or edit count results, and process system generated inventory adjustment. A user who processes system-generated inventory adjustment should be different from a user whose entry count results. Stock count result can be entered in Orlansoft Numbering mobile apps with seamless integration to Orlansoft Stock take.
- ▶ Multi-site feature allows maintenance of inventory balances in many sites (locations of branch office, depot, store, or head office), the access for which is controlled by security assignments.
- ▶ Multi-level Bill of Material with effective date stores formula for item conversion transactions and Orlansoft Manufacturing. Item conversion with automatic or manual assembly and disassembly.
- ▶ Warehouse and Location type:
  - Normal, Work In Process or Transit
  - Normal or Quarantine
  - Nettable or Non-Nettable
  - Use lot or Not use lot
  - Shelf (rack)
- ▶ Inventory GL Grouping enables you to map and link inventory groups to GL accounts to determine purchase, inventory & sales journals. It may also be used to classify :
  - Normal (for inventory, expenses, or work in process)
  - Fixed Assets
  - AR or AP Advances
  - Shipping cost of purchase or Shipping cost of sales

#### Seamless Integration to:



**Orlansoft  
Numbering**

Orlansoft Numbering Mobile Apps speed up the process for end-users in performing stock take, put away, location transfer, Inter-site transfer and receipt transactions, transfer material to production, and return material to warehouse.





## MANUFACTURING

### ORLANSOFT MANUFACTURING (MF) PRODUCT DATA MANAGEMENT

Orlansoft Product Data Management manages product data centrally for item specification, bill of material, routing, toolkit, and product costs. Fully integrated with Orlansoft Inventory management, Orlansoft Purchasing, Orlansoft Sales, and Orlansoft General Ledger, to ensure quick access to key information for use in Orlansoft Manufacturing Planning & Execution.

#### Features & Functions :

- ▶ Item Specification stores detailed item descriptions, inspection standard parameters, tools for material, work-in-process, or finished goods used in the creation of an inspection sheet and certificate of analysis. Item specification template used to accelerate the entry process of item specification.
- ▶ Item sampling menu provides sampling quantity used in inspection sheet transactions to produce quality control documents.
- ▶ Bill of Material makes it possible to define a multi-level bill of material for each manufactured items, with :
  - Revision number
  - Effective & expired date of bill of material
  - Scrap rate, in factor or quantity, and fixed scrap
  - > 1 bill of material for each item ID with BOM quantity and linked to routing ID.
- ▶ Routing allows users to define multiple operations routing and alternative routings for each manufactured items, with:
  - Revision number
  - Effective & expired date of each Routing ID
  - Task type: work center or sub-contract
  - Multiple operation IDs for each Routing ID
  - Multiple machine IDs for each operation ID.
- ▶ Toolkit & Tool supports multiple tools in use for each manufactured-items at each machine with:
  - Use method: Max first or Min first
  - Lifetime type: Number of an hour used, Number of time used, Qty produced or Not applicable.
  - Definable value of tools life, refurbishing point, and maximum number of refurbishing
- ▶ Cost code allows the definition of standard rate per hour for each activity, machine ID, and work center. Standard rate is used in cost variance calculation for Direct labor variances and Overhead variances.

### ORLANSOFT MANUFACTURING (MF) PLANNING & EXECUTION

Orlansoft Manufacturing Planning & Execution supports discrete manufacturing with cost variance analysis by production order.

The functions include the creation of production request, approve and print production order, create material inspection sheet, generate and print production transfer order and transfer material, create machine usage, create and print return material to warehouse, transfer and return tools, creation of certificate of analysis, and ended with create finished goods inspection sheet.

## Features & Functions :

- ▶ Production Request can be created based on Sales order or without Sales Order. This transaction will create automatic planned purchase requests with required quantity (Material Requirement Planning) and planned production order for each machine and work center as defined in Routing master with Infinite capacity planning method.
- ▶ Planned Production Order can be rescheduled, firmed for production, transferred, printed, and used as production order to production floor for each machine and work center.
- ▶ Use primary and secondary quantity in all manufacturing transactions for material, work in process, and finished goods as predefined in item master setting. Items in roll or coil commonly use primary and secondary quantity features.
- ▶ Inspection Sheet records the result of material quality control with definable parameter in item specification. It automatically generates a Location transfer transaction from location type = QA (quarantine) to location type = normal to make available to use in the production process. Material Inspection sheet is integrated with the Procure-to-pay business process to release Receiving transaction to become a purchase invoice transaction.
- ▶ Production Transfer Order transaction from a single Production Request transaction can be printed as an order document for transferring all required materials for each job-order from warehouse to production floor. This transaction can also be created by combining multiple Production orders and use the Round-up quantity in storage unit feature to facilitate the process of material transfer from the warehouse to each work center in the storage unit.
- ▶ Create Transfer material to production transaction when the Warehouse user had issue materials or work-in-process refer to the Production Transfer Order. Transfer material to production transaction deducts stock on hand at a material warehouse and adds stock on-hand at the production warehouse. This transaction can be created in Orlansoft Numbering Mobile Apps to simplify and speed up the transaction process with seamless integration to Orlansoft Manufacturing.
- ▶ Machine Usage facilitates the process of recording all activities at each machine ID for production, idle, maintenance, or overhaul. Machine usage transaction can use to Shift feature and automatically generated the following transactions:

- Finished Goods Receipt with result Quantity
- Hours Accounting with the production time of each machine and activity and can be viewed in the cost variance analysis report.
- Issue material with bill-of-material quantity for backflush items

- ▶ Shift allows the allocation of production shift schedules for each machine and labor with a production calendar.
- ▶ Issue material can be entered manually with the actual quantity of material used for each production order.
- ▶ Production Return Order used as a return order for remaining unused materials from the production floor to material Warehouse
- ▶ The return to warehouse transaction refers to production return order transaction as a handover document of the return of goods to the material warehouse. This transaction can be created in Orlansoft Numbering mobile apps to speed up the transaction process. This transaction deducts stock on-hand at the production floor and adds stock on-hand at the material warehouse.

Seamless Integration to:



# Orlansoft Numbering

Orlansoft Numbering Mobile Apps speed up the process for end-users in performing stock take, put away, location transfer, Inter-site transfer and receipt transactions, transfer material to production, and return material to warehouse.

- ▶ Inspection Sheet for finished goods provides information on the rejected quantity for each production order number.
- ▶ Print Certificate of Analysis with item specification of Finished goods.
- ▶ Transfer tools to Production and return tools to the warehouse have seamless integration to production order with automatic calculation of remaining lifetime.
- ▶ Tools Refurbishing is used to manage refurbishing to extend tools' lifetime.
- ▶ Standard costing with cost variance analysis report per production order is available to measure production efficiency for each finished goods item or work-in-process item and to provide actual cost information for calculating gross margin of sold finished goods item for each customer.



## ORLANSOFT CASH MANAGEMENT (CA)

Orlansoft Cash Management helps the company in managing cash, banks, advances, post-dated checks, bank reconciliation, and performs cash flow monitoring.

Orlansoft Cash Management has seamless integration with Orlansoft payment run in Orlansoft Account Payable to facilitate the creation of Bank disbursement for AP payment to suppliers.

Orlansoft Cash Management also has seamless integration with Orlansoft collection run and Orlansoft confirm collection result to help users with accelerated creation process of Cash receipt, Bank receipt, and Check receipt for AR payment receipt from customers.

All transactions in Orlansoft Cash Management can have the Orlansoft inter-entity feature to help users in creating AP payment transactions from the Head office for all purchase transactions from all branches. This feature also can be used by users at the Branch office for creating AR payment transactions on Head office's bank account.

### Features & Functions :

- ▶ Receipt transaction allows users to record all receipts from customer payment or other receipts directly to cash and bank or using a post-dated check. Receipt transactions for AR Payment or others can be created in entity with different entity ID of Bank or Cash account. For example: receive AR payment for branch's invoices in a head office's bank account.
- ▶ Check Wizards make it easy to perform Deposit Check, Receive Rejected Check and Cancel Received Check.
- ▶ Cash management reports present information on outstanding sales & purchase, outstanding AR & AP, bank and cash accounts, loans, and deposits.
- ▶ Easy to monitor post-dated check status
- ▶ Supplier payment via an issue of post-dated check or bank disbursement.
- ▶ Payment for outstanding AP and operation expenses can have multiple lines with multiple entities.
- ▶ Each line can have a different or same entity ID with an entity ID of selected Bank Account to accommodate a centralized payment policy from head-office. Inter-entity journals for this transaction will be generated automatically in Orlansoft General Ledger.
- ▶ Monitoring cash advance balances per employee in Outstanding Cash Advance report, and easy to create Advance settlement transactions.
- ▶ Petty cash handling and print petty cash voucher.
- ▶ Daily cash reports include balance for all cash, bank, and loan accounts with detail daily transactions.
- ▶ Automation in bank statement reconciliation, and seamless integration with MT940 or Banking API from major banks in Indonesia.
- ▶ Direct cash flow report shows actual weekly cash-flow in the grouped cash-flow ID of each GL Account and only use cash bank transactions as the report data source.





## ORLANDSOFT FIXED ASSETS (FA)

Orlandsoft Fixed Assets used to manage fixed assets registration, addition, transfer, depreciation, adjustment, and disposal or sales.



### Features & Functions :

- ▶ Calculate depreciation in both commercial and tax depreciation methods. The depreciation journal will be created automatically in Orlandsoft General Ledger.
- ▶ Easy to track fixed asset status: location, caretaker, and departments. The asset transfer transaction can be printed as an asset hand-over document when an asset was transferred between locations, departments, or caretakers.
- ▶ Fixed asset group, category, department, and location can be defined to integrate with GL cost centers
- ▶ Pre-setting Fixed Assets ID auto numbering by category.



## ORLANDSOFT GENERAL LEDGER (GL)

Orlandsoft General Ledger tracks all financial transactions, monitors balances of GL account, and produces financial statements. Our GL Reports may contain a single entity or a range of entities and may be shown in summary or detail in one or dual home currency.



### Features & Functions :

- ▶ Flexible COA (Chart of Account) segment; up to 10 segments with 10 alphanumeric each
- ▶ 12 Cost Center group dimensions to act as account dimensions, with 10 alphanumeric each
- ▶ Flexible Cash Flow coding with up to 3-level grouping for flexible cash-flow reporting.
- ▶ Journal Type and Journal Batch with user definable security assignment
- ▶ Recurring journal allows users to define recurring from/to period and generate an automatic recurring journal.
- ▶ Ticking-on specific journals will create an automatic reversing journal and setting the reversing date.
- ▶ Journal Template helps users to create a journal with the following option automatically:
  - Automatic multiple lines of journals with a fixed amount
  - Automatic allocation journals – define allocation percentage to GL Account in each line (including cost center allocation) and enter the allocated amount at journal creation.
  - Generate automatic journal with amount (full amount or percentage factor) from beginning balances, mutation, or ending balances of multiple accounts.
  - Reclassify single or multiple GL account balances to specified GL Account.
  - Reclassify balance of single cost center of single or multiple GL Account to other cost centers with same GL Account
  - Journals can be generated for multiple templates and multiple periods in a single processing.

- ▶ Cost Center Template enables users to create multiple templates of cost center allocation by percentages for each GL Account and then use it in transactions to speed up key-in when cost center allocation is involved.
- ▶ Journal List provides comprehensive journal information of manually entered journals or system-generated journals from other non-GL modules.
- ▶ Summary balance allows users to view account balances in original, home currency, and company management currency. Summary balance provides drill-down capability to subsidiary ledger and journal of source transactions
- ▶ Separate process of GL Closing allows user to have GL period as open and create adjustment journal while Manufacturing, Inventory, Account Receivable, Account Payable, Cash Management and Fixed Assets is closed
- ▶ Temporary or Permanent Close Accounting Period.
- ▶ Easy process of year-end closing
- ▶ Orlansoft inter-entity supports multiple-entity financial requirements with an automatic interentity system-generated journal. Each entity ID has one Balance Sheet, and one or many income statement reports.
- ▶ Financial Report Formatter provides powerful and flexible tools to generate financial reports with the following options:
  - COA Segment & Cost Center Parameters
  - Single Period or Multiple Period
  - Single Entity or Consolidated multiple entities.
  - Compare with Budget
  - Flexible Account Grouping of Report Rows to accommodate user requirements



**Orlansoft**  
Systemize. Integrate. Optimize

## PT. Orlansoft Data System

### JAKARTA OFFICE :

- 📍 Lippo Tower lantai 21 unit 2102, Holland Village Jakarta, Jalan Letjen Suprpto Kav 60 No. 1, Jakarta Pusat, DKI Jakarta 10510, Indonesia
- ☎ +62-21-80679392
- ☎ +62-21-80679393

### SURABAYA OFFICE :

- 📍 Pertokoan SCC Kav. A-48/A-49 (Kompleks Carrefour Rungkut) Jl. Raya Kali Rungkut no 23-25 Surabaya 60293, Indonesia
- ☎ +62 31 8782842
- ☎ +62 31 8782843